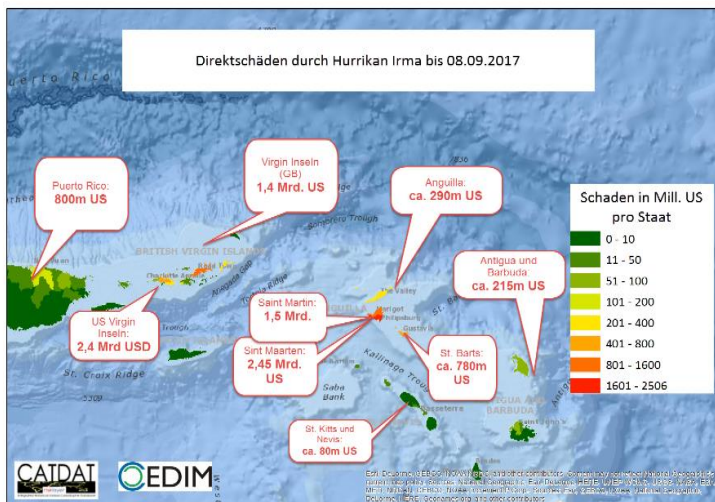


“Irma” Is Most Devastating Caribbean Storm of All Time

KIT Researchers Estimate the Damage to Amount to US\$ 10 Billion – Overseas Territories of EU Member States Affected Strongly



Damage caused by hurricane Irma in the Caribbean in billion US\$. (Image: CEDIM/KIT)

Hurricane Irma that raged on the Atlantic Ocean and in the Caribbean in the past days caused damage in the amount of US\$ 10 billion. This figure was calculated by researchers of Karlsruhe Institute of Technology (KIT). The hurricane of the highest category 5 also was the longest of this intensity. On Caribbean islands, such as Barbuda, St. Martin, and the Virgin Islands, it destroyed a number of houses and made the power, drinking water, and fuel supply systems collapse.

[...]

Being “The Research University in the Helmholtz Association,” KIT creates and imparts knowledge for the society and the environment. It is the objective to make significant contributions to the global challenges in the fields of energy, mobility and information. For this, about 9,300 employees cooperate in a broad range of disciplines in natural sciences, engineering sciences, economics, and the humanities and social sciences. KIT prepares its 26,000 students for responsible tasks in society, industry, and science by offering research-based study programs. Innovation efforts at

Monika Landgraf
Chief Press Officer,
Head of Corp. Communications

Kaiserstraße 12
76131 Karlsruhe, Germany
Phone: +49 721 608-47414
Fax: +49 721 608-43658
Email: presse@kit.edu

For further information,
please contact:

Dr. Felix Mescoli
Press Officer
Phone: +49 721 608-48120
Fax: +49 721 608-43658
Email: felix.mescoli@kit.edu

KIT build a bridge between important scientific findings and their application for the benefit of society, economic prosperity, and the preservation of our natural basis of life.

Since 2010, the KIT has been certified as a family-friendly university.

This press release is available on the internet at http://www.sek.kit.edu/english/press_office.php.

The photo of printing quality may be downloaded under www.kit.edu or requested by mail to presse@kit.edu or phone +49 721 608-4 7414. The photo may be used in the context given above exclusively.