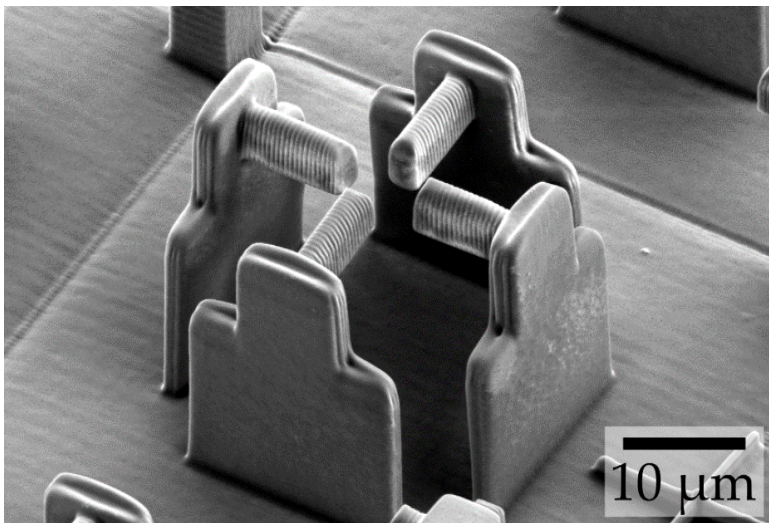


“Stretching Rack” for Cells

An ingenious device, only a few micrometers in size, enables to study the reaction of individual biological cells to mechanical stress – publication in *Science Advances*



Electron micrograph of the “empty” scaffold (without hydrogel) that an international research team used to deform individual cells. (Image: Marc Hippler, KIT)

The behavior of cells is controlled by their environment. Besides biological factors or chemical substances, physical forces such as pressure or tension are also involved. Researchers from Karlsruhe Institute of Technology (KIT) and Heidelberg University developed a method that enables them to analyze the influence of external forces on individual cells. Using a 3D printing process, they produced micro-scaffolds, each of which has four pillars on which a cell is located. Triggered by an external signal, a hydrogel inside the scaffold swells and pushes the pillars apart, so that the cell must “stretch.” The work is part of the “3D Matter Made to Order” (3DMM2O) Cluster of Excellence. The researchers report on their results in *Science Advances* (DOI: 10.1126/sciadv.abc2648).

Many cellular biological processes, such as wound healing or the development of tissue, are strongly influenced by the properties of their environment. Cells react, for example, to biological factors or chemical substances. However, research is increasingly focusing on physical forces acting on the cells: How exactly do the cells adapt to these forces?

Monika Landgraf
Head of Corp. Communications

Kaiserstraße 12
76131 Karlsruhe, Germany
Phone: +49 721 608-41105
Email: presse@kit.edu

For further information, please contact:

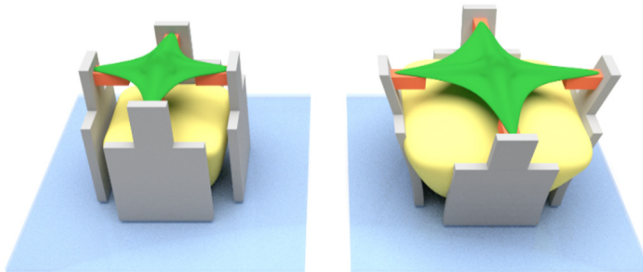
Dr Felix Mescoli
Editor/Press Officer
Phone: +49 721 608-41171
Email: felix.mescoli@kit.edu

Further material:

Publication in *Science Advances*:
<https://advances.science-mag.org/content/6/39/eabc2648>

Within the framework of the German-Japanese University Consortium HeKKSaGOn and in cooperation with Australian scientists, the 3DMM2O team has taken a particularly ingenious approach to this question. For the production of their cell “stretching racks” they used “direct laser writing”, a special 3D printing process in which a computer-controlled laser beam is focused into a special printer ink liquid. Its molecules react only at the exposed areas and form a solid material there. All other areas remain liquid and can be washed away. “This is an established method in our Cluster of Excellence for building three-dimensional structures – on the micrometer scale and below,” explains Marc Hippler from the KIT Institute of Applied Physics, lead author of the publication.

In the current case, the researchers used three different printer inks: The first ink, made of protein-repellent material, was used to form the actual micro-scaffold. Using a second ink of protein-attracting material, they then produced four horizontal bars that are connected to one of the scaffold pillars each. The cell is anchored to these four bars. The real showstopper, however, is the third ink: The scientists used it to “print” a mass inside the scaffold. If they then add a special liquid, the hydrogel swells. It thus develops a force sufficient to move the pillars – and the bars with them. This, in turn, has the effect of stretching the cell that is fixed to the bars.



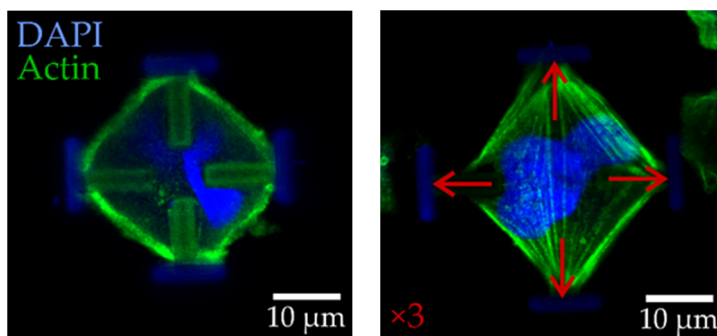
The hydrogel (yellow) swells and pushes the micro-scaffold (grey) apart – together with the cell-attracting bar (orange). This deforms the cell (green). (Graphics: Marc Hippler, KIT)

Cells counteract deformation

The scientists of the Cluster of Excellence placed two completely different cell types on their micro stretching rack: human bone tumor cells and embryonic mouse cells. They found that the cells counteract the external forces with motor proteins and thus greatly increase their tensile forces. When the external stretching force is removed, the

cells relax and return to their original state. “This behavior is an impressive demonstration of the ability to adapt to a dynamic environment. If the cells were unable to recover, they would no longer fulfill their original function – for example wound closure,” says Professor Martin Bastmeyer from the Zoological Institute of KIT.

As the team further discovered, a protein called NM2A (non-muscle myosin 2A) plays a decisive role in the cells' response to mechanical stimulation: Genetically modified bone tumor cells that cannot produce NM2A were barely able to counteract the external deformation.



Light-microscopic images of stained embryonic mouse cells in their normal (left) and stretched states (right). The red arrows indicate the forces acting on the cells. (Image: Marc Hippler)

Work in the cluster of excellence was carried out by Heidelberg scientists from the field of biophysical chemistry as well as physics and cell- and neurobiology from KIT. Members of the German-Japanese University Consortium HeKKSaGOn include, among others, Heidelberg University, Karlsruhe Institute of Technology and Osaka University.

Cluster of Excellence 3D Matter Made to Order

In the 3D Matter Made to Order (3DMM2O) Cluster of Excellence, scientists of Karlsruhe Institute of Technology and Heidelberg University conduct interdisciplinary research into innovative technologies and materials for digital scalable additive manufacture to enhance the precision, speed, and performance of 3D printing. Work is aimed at completely digitizing 3D manufacture and materials processing from the molecule to the microstructure. In addition to funding as a cluster of excellence under the Excellence Strategy competition launched by the federation and the federal states, 3DMM3O is financed by Carl Zeiss Foundation.

More information: www.3dmm2o.de

Original publication:

Marc Hippler, Kai Weißenbruch, Kai Richler, Enrico D. Lemma, Masaki Nakahata, Benjamin Richter, Christopher Barner-Kowollik, Yoshinori Takashima, Akira Harada, Eva Blasco, Martin Wegener, Motomu Tanaka, Martin Bastmeyer. Mechanical Stimulation of Single Cells by Reversible Host-Guest Interactions in 3D Micro-Scaffolds, Science Advances, 2020, DOI: 10.1126/sciadv.abc2648

<https://advances.sciencemag.org/content/6/39/eabc2648>

Founded in 1386, Ruperto Carola is an internationally oriented research university whose subject spectrum includes the humanities, the social sciences, law, the natural and life sciences, and medicine. As one of the Universities of Excellence in Germany, Heidelberg University's successes in the Excellence Competitions and its standing in international rankings confirm its leading role in the academic landscape. It is part of Heidelberg University's self-concept to further develop outstanding individual disciplines, to strengthen interdisciplinary cooperation, and to carry research results over into society. With a research-oriented course of study in more than 180 programmes, its nearly 30,000 students can choose from a virtually singular array of subject combinations and individual qualification pathways.

Being "the Research University in the Helmholtz Association," KIT creates and imparts knowledge for the society and the environment. It is the objective to make significant contributions to the global challenges in the fields of energy, mobility and information. For this, about 9,300 employees cooperate in a broad range of disciplines in natural sciences, engineering sciences, economics, and the humanities and social sciences. KIT prepares its 24,400 students for responsible tasks in society, industry, and science by offering research-based study programs. Innovation efforts at KIT build a bridge between important scientific findings and their application for the benefit of society, economic prosperity, and the preservation of our natural basis of life. KIT is one of the German universities of excellence.

This press release is available on the internet at www.sek.kit.edu/presse.php

The photo in the best quality available to us may be downloaded under www.kit.edu or requested by mail to presse@kit.edu or phone +49 721 608-41105. The photo may be used in the context given above exclusively.